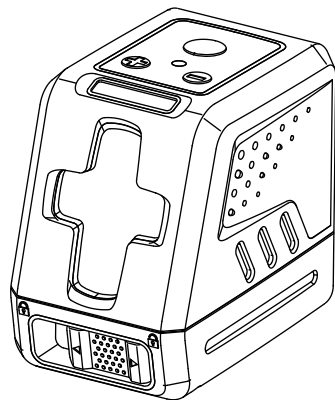


# LASER LEVEL

Manual in English



Version: T07/08 200227

## Contents

Congratulations!

You have chosen one of our laser level that's guaranteed reliable and tough for professional tool users at various job sites.

- SAFETY
- SPECIFICATION
- PRODUCT OVERVIEW
- OPERATING
- MAINTENANCE
- WARRANTY

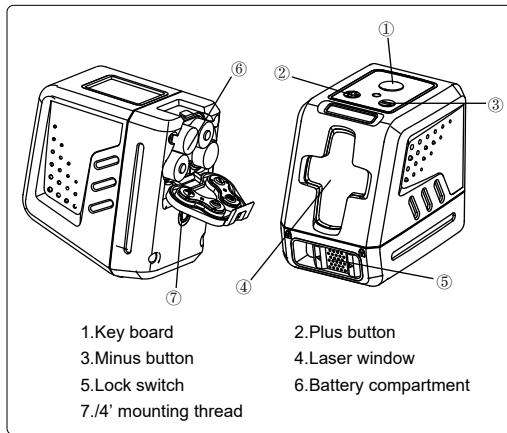
## SAFETY

- Read the Safety Instructions and Manual thoroughly before using this product. All users must fully understand and adhere to these instructions.
- While the product is in operation, be careful not to expose your eyes to the emitting laser beam (red light source). Exposure to a laser beam for an extended time may be hazardous to your eyes.
- Do not stare directly into the beam or view directly with optical instruments or set up the laser at eye level.
- Do not disassemble the laser tool. There are no user serviceable parts inside.

-1-

- Do not modify the laser in any way. Modifying the tool may result in hazardous Laser Radiation Exposure.
- Do not operate the laser around children or allow children to operate the laser.
- An exposure to the beam of a Class 2 laser is considered safe for a maximum of 0.25 seconds. Eyelid reflexes will normally provide adequate protection.

## PRODUCT OVERVIEW



- 1.Key board
- 2.Plus button
- 3.Minus button
- 4.Laser window
- 5.Lock switch
- 6.Battery compartment
- 7./4" mounting thread

-2-

## SPECIFICATION

Laser Class	Class II
Laser Wavelength	630~670nm for Red beam 505~550nm for Green beam
Leveling Accuracy	±1.5mm/5m
Leveling/Compensation Range	4°±1°
Working Distance (Line)	15m for Red beam 30m for Green beam
Operating Time	Red Beam : First gear: about 40 Hours Tenth gear: about 180 Hours Green beam: First gear: about 10 Hours Tenth gear: about 40 Hours
Power Source	4×1.5V AA
IP Rating	IP54
Operation Temperature Range	-10℃~+50℃
Storage Temperature Range	-25℃~+70℃

-3-

## OPERATING

Before insert two pieces of AA batteries correctly, Please make sure Lock Switch at '🔒' position.

And please keep the Lock Switch at '🔒' position during moving the laser level or storage it.

↑↑ Then are both very important!

### 1.self-leveling mode

Turn Lock Switch at '🔒' position, vertical and horizontal laser beams both light up, and the machine will be self-leveling. Indication light is green.( If key indication light is red, and lines flash, it indicates the lines is not level, please put laser level on much flatter place, because the self-leveling rang is about 40)

Short press the power button, the horizontal line is turned off, and the vertical line works. Short press the power button again, the vertical line is turned off, and the horizontal line is working. Press the power button again, the horizontal line and the vertical line are lit. Back and forth.

Turn Lock Switch at '🔒' position, laser level stop working.

### 2.Locked Mode:

When Lock Switch at '🔒' position, long-press key button, vertical and horizontal laser beams both light up and flash every 5 seconds , the indication light is red.

Short press the on key, the horizontal line is off, and the vertical line works, blinking every 5 seconds.

Short press the key again, the horizontal line works, and the vertical line turns off, blinking every 5 seconds.

Short press the key again, both the horizontal and vertical lines work, blinking every 5 seconds.

Back and forth.

In this case, you can tilt the spirit level at will.

Press and hold the power button to turn off the laser level.


### 3. Energy saving mode:

In auto-leveling mode and tilt mode, short press the + key, the light gradually becomes brighter, the light brightness is divided into 10 levels, long-press the light to become the brightest state, when the brightest state is reached, the laser will flash to remind; Short Press the - key to gradually darken the light. The light brightness is divided into 10 levels. Press and hold the light to become the darkest state. When the darkest state is reached, the laser will flash to remind.

The energy-saving mode has a memory function, what brightness is when it is turned off, and the last light brightness is retained when it is turned on again.

### 4.pulse mode:

In the auto-leveling mode, long press the power button to enter the pulse mode. The green light will flash continuously. In this mode, the + and - energy saving modes are invalid.

 Note: If the indicator is red and flashes frequently, it means that the battery is weak and the battery needs to be replaced.

## MAINTENANCE

• The laser tool is sealed and calibrated at the plant to the accuracy specified.

• It's recommended to carry out a accuracy check before its first use and periodic checks during future use especially for precise layouts.

• Do not short any battery terminals or charge alkaline batteries or dispose of batteries in fire.

• Do not mix old and new batteries. Replace all of them at the same time with

new batteries of the same brand and type.

• Keep batteries out of reach of children.

• Remove batteries if the tool will not be used for several months.

• Do not store the laser tool in direct sunlight or expose it to high temperatures.

The housing and some internal parts are made of plastics and may become deformed at high temperatures.

• Exterior plastic parts may be cleaned with a damp cloth.

Although these parts

are solvent resistant, NEVER use solvents. Use a soft, dry cloth to remove moisture from the tool before storage.

• Do not dispose of this product with household waste.

• Always dispose of batteries per local code.

## WARRANTY

We are confident of the quality of our products and offer outstanding guarantee for professional users of the products. This statement is in addition to and in no way prejudices your contractual rights as a professional user or your statutory rights as a private non-professional user. We warrant our laser level(s) against faults in materials and workmanship for one year from date of purchase provided that:

• Proof of purchase is produced.

• Service/repairs have not been attempted by unauthorized persons;

• The product has been subject to fair wear and tear;

• The product has not been misused;

Defective products will be repaired or replaced, free of charge or at our discretion,if sent together with proof of purchase to our authorized distributor(s).

This Warranty does not cover faults caused by accidental damage, unfair wear and tear, and use other than in accordance with the manufacturers' instructions or repair or alteration of this product not authorized by us.

Repair or replacement under this Warranty does not affect the expiry date of the Warranty.

To the extent permitted by law, we shall not be liable under this Warranty for indirect or consequential loss resulting from faults in this product. This Warranty may not be varied without our authorization. Calibration and care are not covered by warranty.